



MATRIX COLLECTION

BY RUG ONE IMPORTS, LTD.



MATRIX - CHERRY

AT A GLANCE:

- 100% H.S.P.P. PILE
- WILTON WOVEN IN TURKEY
- AVAILABLE IN AREA RUGS AND RUNNERS
- SOFT WOOL LIKE APPEARANCE AND FEEL

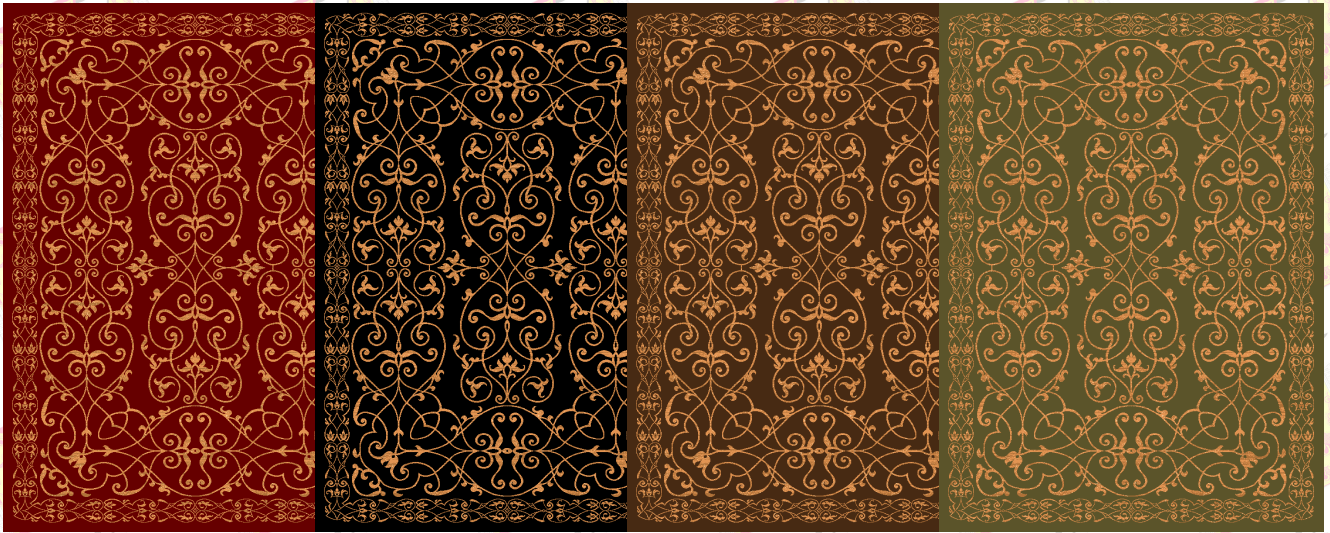
Designed and styled for the discriminating residential consumer looking for affordable decorative carpeting, our "Matrix" rugs are beautiful designs with today's popular color ways.

This value priced collection is power loomed of heat set polypropylene using a Wilton face to face construction. A traditional design, "Matrix" is available in two popular area rug sizes and matching 27" continuous stair/hall runners. Stair/hall runners can be cut to any desired length. All are in stock for immediate delivery.

View our Matrix Collection at

www.rugoneimports.com

or contact your Rug One Imports sales representative at
1-800-248-1128.



Cherry

Black

Brown

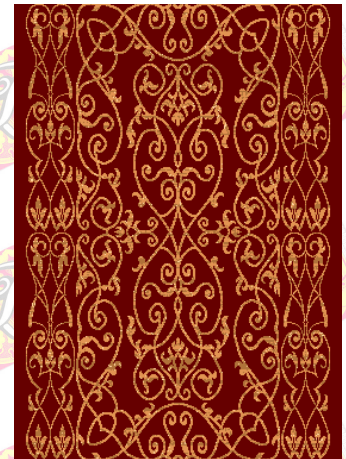
Dark Green



7'10" X 10'10"
Area Rug



5'3" X 7'7"
Area Rug



27" Runner

* As with all fabrics, dye lots are subject to minor color variations and size. Pattern repeats may vary in accordance with area rug shape and size.

** Rug images shown are not to scale.

AVAILABLE COLORS:

Cherry
Brown
Black
Dark Green

AVAILABLE SIZES:

5'3" X 7'7"
7'10" X 10'10"
27" Runner

PATTERN REPEAT

27" Runner
29.5"